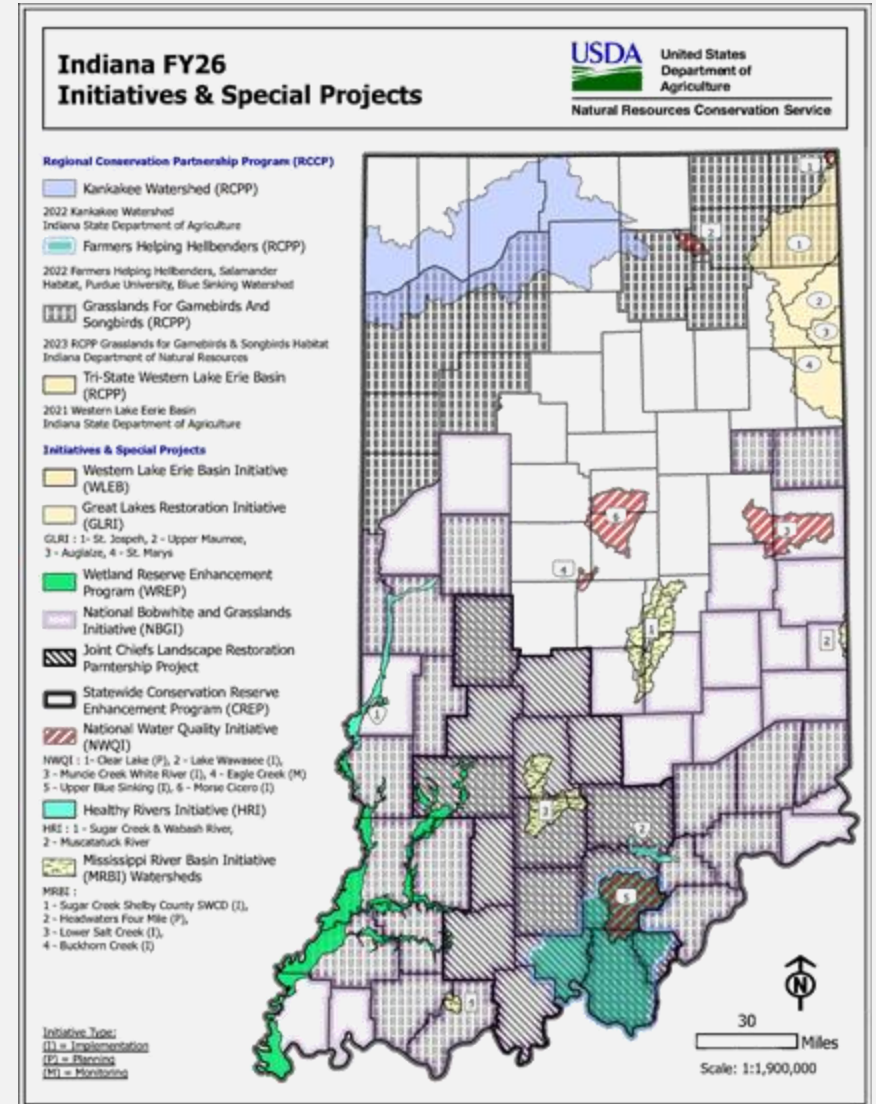


Special Projects/Initiatives

JACKSON, LAWRENCE and MONROE COUNTIES

- Lower Salt Creek Mississippi River Basin Healthy Watershed Initiative (MRBI)
- Grasslands for Gamebirds and Songbirds Regional Conservation Partnership Program (RCPP)



Lower Salt Creek MRBI

Sponsors

- Monroe County Soil and Water Conservation District
- Lawrence County Soil and Water Conservation District
- Indiana State Department of Agriculture

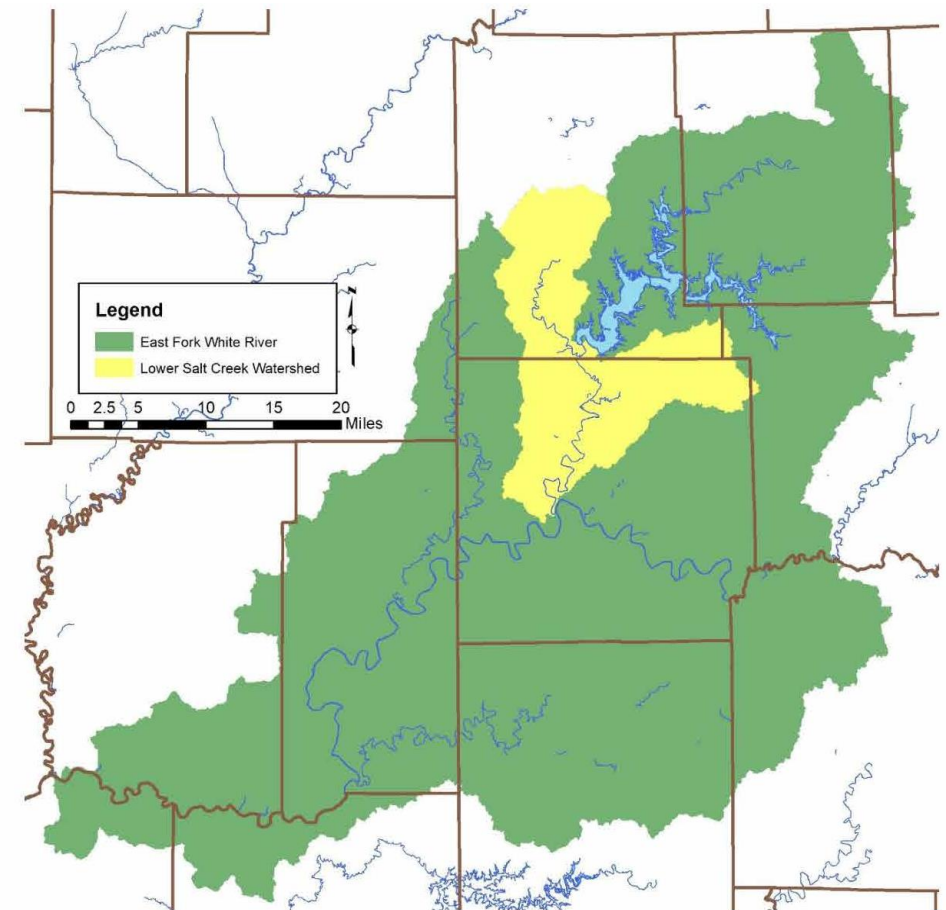
Project Area

- 130,245 acres in portions of Monroe, Lawrence and Jackson counties.

NRCS Funding Available for Core Practices

- Cover Crops
- Fencing
- Heavy Use Area Protection
- Livestock Pipeline
- Pasture and Hay Planting
- Prescribed Grazing
- Watering Facility
- No-till
- Grassed Waterway
- Lined Waterway or Outlet
- Herbaceous Weed Control
- Brush Management
- Conservation Cover
- Tree/Shrub Establishment

Project Map



Grassland for Gamebirds and Songbirds RCPP

Sponsors

- Indiana Department of Natural Resources (IDNR)
- Indiana State Department of Agriculture (ISDA)
- Pheasants Forever
- Soil and Water Conservation Districts (SWCDs)
- US Fish and Wildlife Service
- Sam Shine Foundation

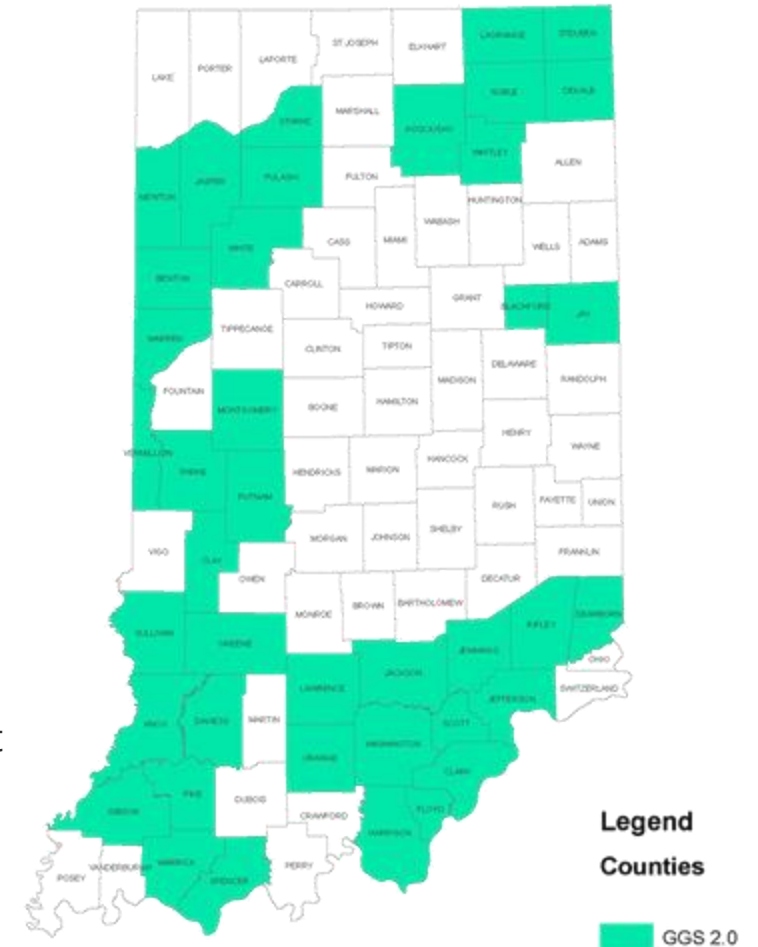
Project Area

- 40 Counties throughout Indiana

NRCS Funding Available for Core Practices

- | | |
|---|--|
| <ul style="list-style-type: none"> ■ Wildlife Habitat Planting ■ Conservation Cover ■ Early Successional Habitat Development ■ Prescribed Burning ■ Upland Wildlife Habitat Mgmt. ■ Tree/Shrub Establishment ■ Structures for Wildlife | <ul style="list-style-type: none"> ■ Firebreak ■ Prescribed Grazing ■ Hedgerow Planting ■ Restoration of Rare/Declining Habitat ■ Field Border ■ Herbaceous Weed Control ■ Brush Management |
|---|--|

Project Map





Natural Resources Conservation Service
U.S. DEPARTMENT OF AGRICULTURE

For more information about NRCS funding opportunities:

Jackson Co: Paige Hudson
Lawrence Co: Whitney Baldwin
Monroe Co: Leah Hagemeyer

